

# To Let

## Retail Unit

### 13 Napier Court, Cumbernauld, G68 0LG

Rent: **£11,250** per annum



#### Size

The property is approximately 2005sqft

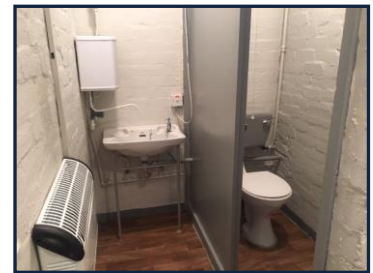
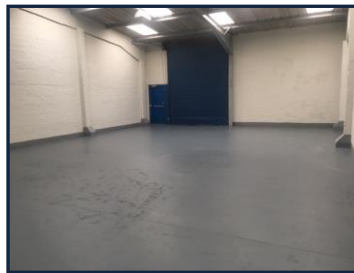
#### Lease

The subjects are offered on the basis of a new Full Repairing and Insuring Lease for a term to be agreed. Rental offers will be considered in the region of £11,250 per annum

#### Rates

Rateable value is £8,100 per annum.

Any potential occupier may qualify for 100% rates relief under the Small Business Bonus Scheme.



Looking To Rent are delighted to bring to the market this commercial unit in Napier Court based within the popular Wardpark Industrial Estate in Cumbernauld. The unit occupies a prominent position within a parade of 5 units and benefits from easy access to transport links and the motorway.

This single storey industrial unit comprises of an entrance hallway leading to an office space with visitor toilets opposite. At the end of the hall is a doorway leading onto a vast warehouse space with roller shutter access to allow vehicles to enter, there is also a staff kitchen and staff toilets. This unit is suitable for many types of businesses.

The unit further benefits from additional parking, communal surrounding gardens and has been recently decorated.

To arrange a viewing please contact the office on 0141 550 2255 or alternatively email [info@lookingtorent.co.uk](mailto:info@lookingtorent.co.uk)

Deposit **£2812.50**  
Available From: **Immediately**  
EPC Rating: **C**

